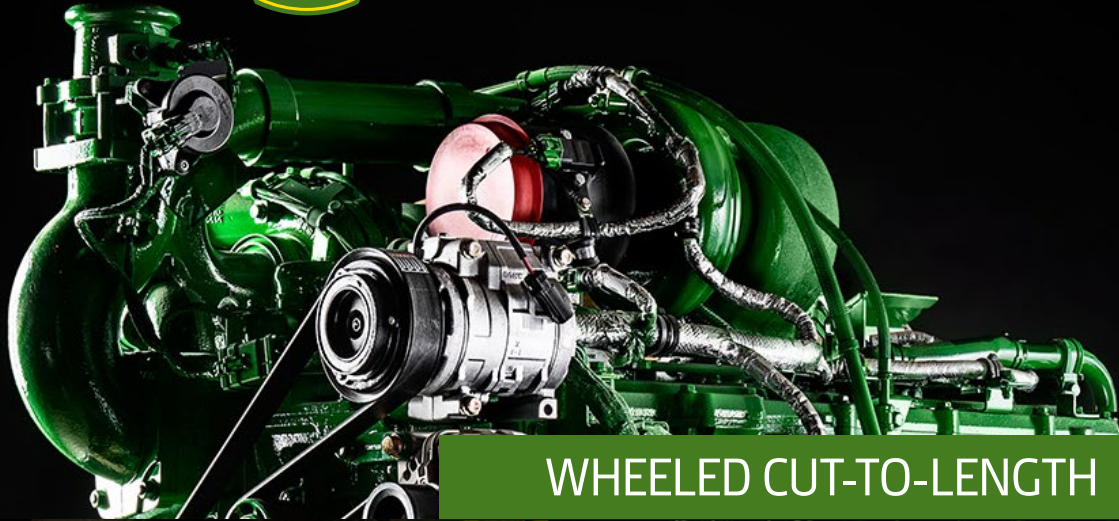




JOHN DEERE



WHEELED CUT-TO-LENGTH



WHAT'S NEW 2017

FOREST MACHINES



WHAT'S NEW 2017

IMPROVING GOOD TO BE EVEN BETTER
**TO MAKE YOUR WORK
MORE EFFICIENT**



A worker wearing a camouflage cap, safety glasses, and large headphones is focused on working on a bright green piece of machinery. The scene is set in a dark industrial environment, likely a factory or workshop, with dramatic lighting highlighting the worker and the machine. The worker is using a tool to adjust or inspect a part of the machine.

DELIVERING UNPRECEDENTED
**PRODUCTIVITY
WITH A GENTLE
FOOTPRINT**

“Designed with input from our loyal customers, John Deere Forestry is proud to offer the most versatile, reliable, and productive machines ever put in the woods. We are introducing the most relevant and recent product improvements to ensure your machine’s best possible performance and reliability”

PETRI AHOLA
QUALITY MANAGER, JOHN DEERE FORESTRY



WHAT'S NEW IN THE
CABIN

NO COMPROMISES — MORE PRODUCTIVITY AND COMFORT

An ergonomic and comfortable cabin is the key to efficient and productive operators.

IMPROVED HVAC SYSTEM

- Heating, ventilation, and air conditioning (HVAC) system in rotating and leveling cabins has been upgraded to improve temperature control and reliability.
- Water valve actuator housing has been redesigned and more durably constructed.
- Hose components have been refitted to provide a low permeation rate and longer wear life.
- New air-conditioning compressor helps keep the cabin cool.

NEW JOYSTICKS

- Thanks to input from machine operators during a three-year trial, new joysticks deliver more accurate movements and are more comfortable to use.

CABIN LEVELING

- More stable cabin leveling increases operator comfort.
- New sensor bracket includes four-point mounting.
- Improved leveling sensor software enables smoother movements and shorter response times.

ENHANCED SAFETY AND COMFORT

- Four-point seat belts in rotating and leveling cabins hold the operator securely and comfortably in the seat over rough terrain and on steep slopes, boosting safety and machine control.





WHAT'S NEW IN

BOOMS



SMARTER THAN EVER — ENHANCED DESIGN TO MATCH YOUR APPLICATION

Reach new heights of uptime and productivity with reinforced boom structures and more precise Intelligent Boom Control (IBC).



FORWARDERS

- CF5: new, stronger lift boom structure; for 1010E and 1110G.
- CF7S-10: reinforced hidden-hose jib boom (increased wall thickness); for 1510G.
- CF7: reinforced main boom (the same as CF7S).

HARVESTERS

- CH7-86: reinforced lift boom with 8,6-m reach; for 1270G.
- CH6 and CH7: lift boom with floating hydraulic tube mounting for thermal movement and longer wear life.

IBC 2.0

- Improved control for increased productivity.
- The new version of IBC 2.0 with slew control now available for 1110G, 1210G, 1510G, 1910E, and 1910G models.



WHAT'S NEW IN

HARVESTER HEADS

WE DEVELOP OUR EQUIPMENT TO MAKE YOUR WORK MORE EFFICIENT

Robust new harvester head controller helps improve reliability and uptime.

NEW CONTROLLER

- All harvester head functions are governed by one controller.
- Direct wires from controller to valves have been reworked with more reliable controller connectors.

LOW-TEMPERATURE HOSE

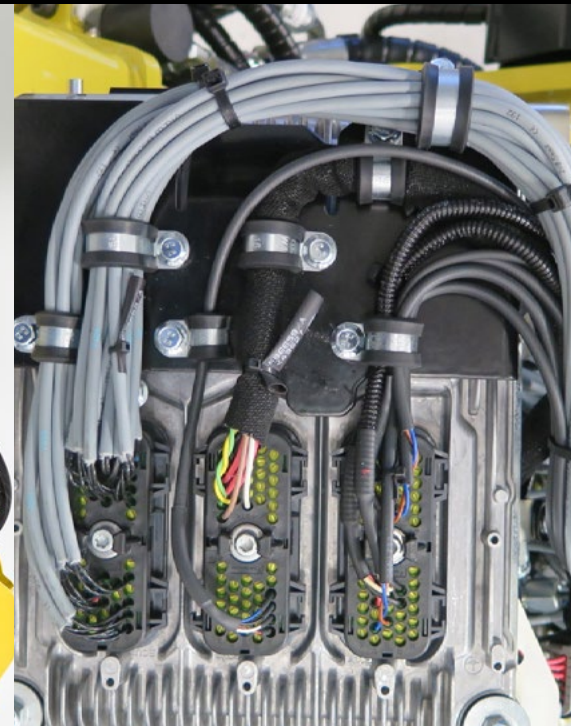
- Low-temperature hose offers high performance and flexibility in the harshest of conditions.
- Now available in H414 and H270 as well as H413 and H415.

H270 PROTECTIONS

- Front end of the valve cover has been narrowed.
- Top cover plate is divided into two pieces
- Saw box cover has been extended.
- Feed motor covers are reinforced.

H290 PROTECTIONS

- Valve cover box is reinforced.
- New cover has been added for hydraulic hose connectors.
- New covers protect hydraulic hoses.
- Saw box cover for saw motor hoses has been extended.
- Feed motor and hydraulic hoses next to heavy-duty feed motor covers have been improved, for longer wear life.



ADDITIONAL NEW FEATURES

- New pressure sensors are more reliable.
- Protection for diameter sensor hose has been improved in H413 and H415 harvester heads.
- EVO valve pressure control has been updated in the H412, H414, H480C, H270, H290, and H215E, for more accurate proportional pressure control and increased uptime.
- H414 grease chain lubrication is adjustable from 0,32–0,14 ml, for minimal, environmentally friendly lubricant consumption, better visibility, and no more oil dust on the windshield.
- H415 multi-speed thumbnail rollers and H290 processor knives are available.



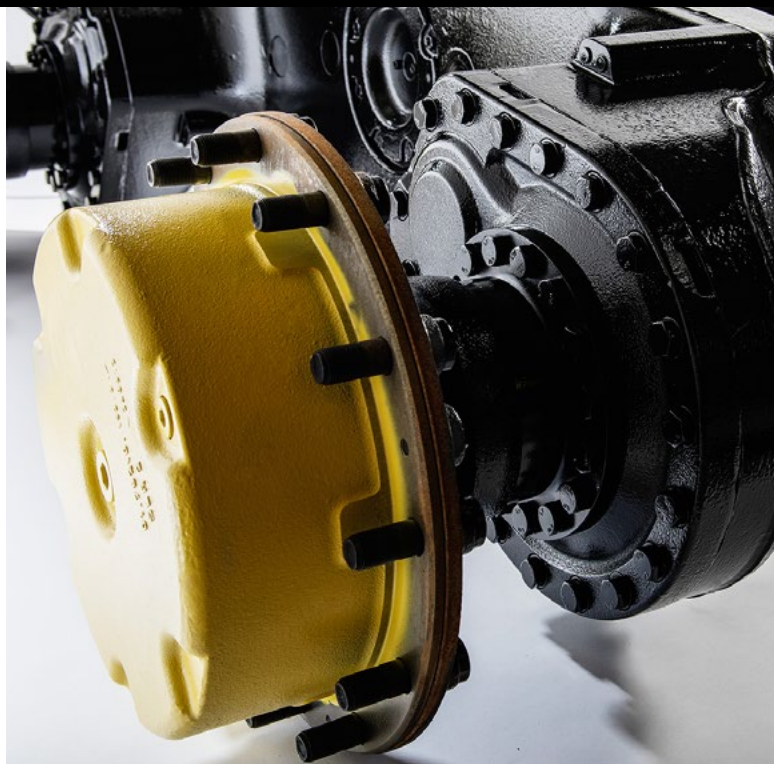


WHAT'S NEW IN

POWERTRAIN AND FRAMES

IN THE FOREST YOU'LL NEED ALL THE HELP YOU CAN GET

Forest-tough frame structures and new powertrain features deliver exceptional uptime.



VG35 AND VG75 GEARBOXES

- Experience exceptional uptime and durability with new powertrain VG35 and VG75 gearboxes.
- Shaft bearing has been improved.
- Case casting is redesigned, for better lubrication.
- VG75 gear geometry has been optimized.

FUEL FILLING PUMP

- Redesigned pump mounting enables more reliable function.
- Access to the primary fuel filter is easier.

IMPROVED DIFFERENTIALS FOR HIGHER QUALITY

- 1110G: reinforced input pinion bearing system, LOK213.
- 1910E: bigger differential in rear, LOK217.
- 1070E IT4: bigger front differential, LOK214.
- 1270G: stronger rear differential, LOK215.
- 1470G: stronger rear differential, LOK232.

NEW BRAKE PLATE

- Grooved and harder harvester frame brake plate improves performance and reduces the need for service.

REINFORCED FRAMES FOR BETTER DURABILITY

- Rear frame reinforced:
 - 1910G
 - 1910E
- Front frame reinforced:
 - 1110G
 - 1210G
 - 1510G

TYRES

- New models available from Nokia: F2 for tracks use, TRS2 with aggressive profile.
- Alliance tyres now also available in 24,5-, 26,5-, and 34-in. sizes.

LOW GROUND PRESSURE (LGP) BOGIE

- Long bogie housing is available as option for 1210G and 1510G.
- New LOK212 with 390 mm longer bogie housing reduces ground pressure in soft soil and delivers uncompromised performance in normal conditions.



WHAT'S NEW IN
**MACHINE
AUTOMATION**

THE NEW STANDARD OF ACCURACY

John Deere machine automation has been improved based on customer requests. Several new features help increase machine accuracy and ease jobsite tasks.

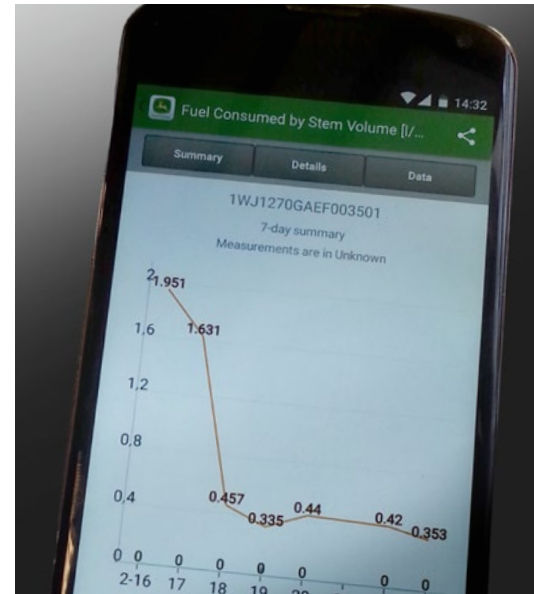


TIMBERMATIC SOFTWARE

- Engine rpm-warmup limits have been changed based on customer needs.
- Harvester head pressure-setting graph is available for setting the correct pressure values for stem grappling.
- Support is provided for flexible bucking.
- New joystick patterns can be changed between left and right joysticks (ISO pattern).
- TimberOffice™ 5 and Wireless Data Transfer files save automatically.
- StanFord2010 updates have been improved.
- A greater range of Imperial units is available.
- Diagnostics have been improved and a software fuse added for G-Series models.

JDLink™

- New JDLink Ultimate display enables the owner or fleet manager to see more specific machine metrics.
 - Harvester productivity is measured in m³/h and fuel consumption in l/m³.
 - Forwarder productivity is measured in tons transported/day and fuel consumption/work phases.



WHAT'S NEW IN

**JOHN DEERE
FORESTSIGHT**



TURN DATA INTO INSIGHTS TO OPTIMIZE YOUR MACHINES, UPTIME, AND JOBSITES

John Deere ForestSight — bringing together machines, technology, and your Deere dealer to make your job easier.



MACHINE OPTIMIZATION

Apply the machine and operating data provided through John Deere ForestSight to increase the productivity and efficiency of your operation.

UPTIME OPTIMIZATION

Integrate machine data and diagnostics tools with dealer support and parts availability to maximize uptime.

JOBSITE OPTIMIZATION

From nearly any location, you can see when and where your machines are working and how they are being operated. This up-to-the-minute data lets you manage overall production more efficiently.

KEEP YOUR DEERE A DEERE

Original John Deere Forestry spare parts and Reman parts are covered for 12 months with unlimited hours when installed by an authorized John Deere dealer.

WIDE-RANGING SERVICES AND COMPONENTS ENSURE YOUR FLEET KEEPS GOING ON

Keep in mind the versatile John Deere services and remanufactured components for continuous operation without downtime and surprises.

REMAN COMPONENTS

- We have engines, hydraulic pumps, fuel-injection components, starters, alternators, and air-conditioner compressors for the full line of John Deere forestry machines.
- When installed by an authorized dealer, you get one year unlimited hours of full coverage including parts and labor.
- By replacing a component before it fails, you preempt downtime at a fraction of the cost of a new component.
- Reman is always an environmentally friendly option when compared to replacement with a new component.

PARTS ADVISOR™ MOBILE

- Replaces mobile and tablet John Deere Parts Catalog (JDPC).
- Delivers parts catalog information.
- Provides an intuitive parts search.
- Supports iOS, Android, and Windows devices.

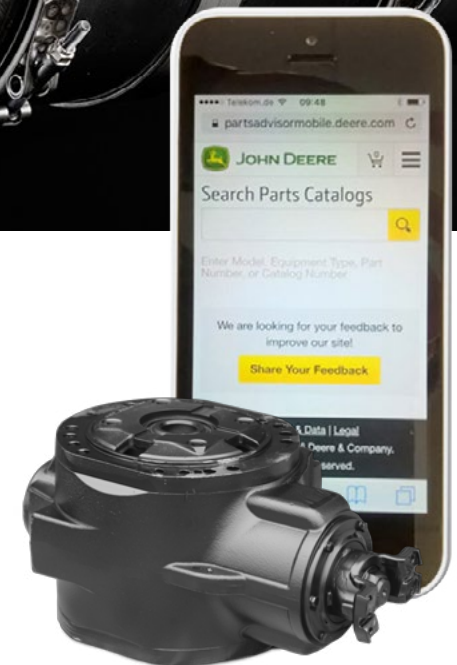
JOHN DEERE EXPERT CHECK

- Are you sure about your machine's technical condition?
- Expert Check will provide a list of all 170 checkpoints performed by our specialists.
- Consultation is available for technical questions and advice on machine optimization and settings.
- Ask your local dealer about additional services and features.



SERVICE AGREEMENTS

- Save money and time with TimberCare™ service agreements.
- With TimberCare you can extend engine oil-service intervals from 500 to 750 hours.
- Extend other oil-change intervals. For example, bogie oils changes can be extended depending on oil-sample test results or if a visual look shows oil quality to be good.





HUNGRY FOR MORE?
**VISIT YOUR
LOCAL DEALER**

This brochure has been compiled for worldwide circulation. While general information, pictures, and descriptions are provided, some illustrations and text may include options and accessories not available in all regions. For more information, please contact your local John Deere dealer. John Deere reserves the right to change specification and design for products in this brochure without notification. John Deere is not liable for any possible errors or omissions in this brochure.