

PRODUCT **BULLETIN**

JANUARY 2019

GENERAL CONSTRUCTION



**NO TASK
TOO TOUGH**

www.casece.com

**EXPERTS FOR THE REAL WORLD
SINCE 1842**

CASE
CONSTRUCTION



WHEEL LOADERS

GET PROTECTED WITH PROTECH5 ON G-SERIES WHEEL LOADERS

The Protection Program offered by CASE further improved in 2019

Taking inspiration from the 2018 ProTech4 experience, CASE decided to enhance it to **ProTech5** Program.

All the G-Series Wheel Loaders **retailed from January 1st to December 31st 2019** in Europe (excluding the UK and RoI) will be provided with one of the following CASE Protection Plan options, included in the machine price:

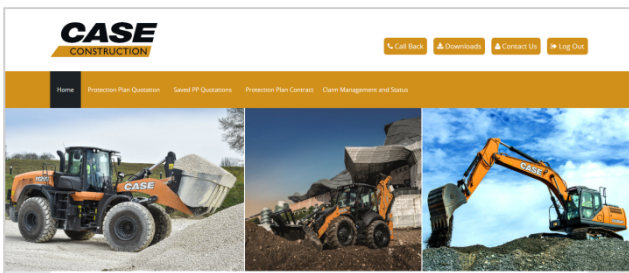
- **ProTech5: 5 years / 6000 hours** (including the 1st year of base warranty) with **Powertrain + Hydraulics** coverage;
- **ProTech3: 3 years / 4000 hours** (Including the 1st year of base warranty) with **Premier** coverage.

The selected Protection Plan coverage must be, as usual, **activated on the CASE Protection Plan (CPP) website**, accessible through the Dealer Portal.

CASE Protection Plan portal will propose you ProTech5 option as default for any eligible unit to be registered.

The coverage option can be turned into ProTech3, 3 years / Premier, without any additional cost.

Please contact your CASE Protection Plan Help Desk (mail: ppsupportcasece@cnhind.com) at registration date to **convert ProTech5 into ProTech3**, in case it may better meet your Customer needs.



After that you will be notified via email by the CASE Protection Plan partner (EPG Administration Services) that the new contract has been accepted and validated.

When registering, don't forget to upload the scanned copy of the CASE Protection Plan contract signed by Dealer and Customer on the CASE Protection Plan.

To qualify each G Series Wheel Loader unit must be granted proper maintenance, as per Operator Manual instructions.

If the ProTech5 promotion is selected, you can directly proceed with the machine registration on the CASE Protection Plan website, as already done in 2018 with ProTech4.

Further details and a quick Dealer Guide will be shortly provided.

Important note:

- **SiteWatch™ hardware and subscription is not included in the ProTech5 Campaign,**
- Any subscription activation code related to a 2018 ProTech4 unit which has not been declared Retail delivered by December 31st 2018 will be disabled.

