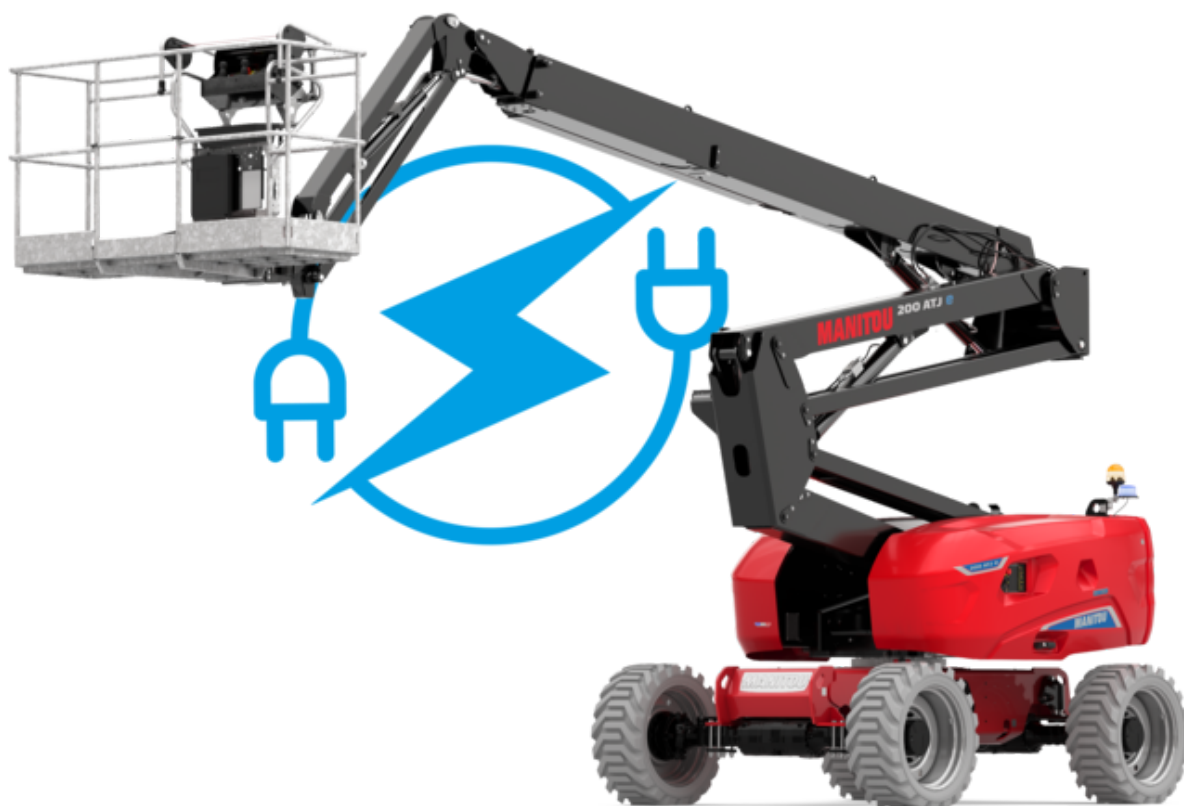


Technical sheet :

# 200 ATJ **E** 4WS CR

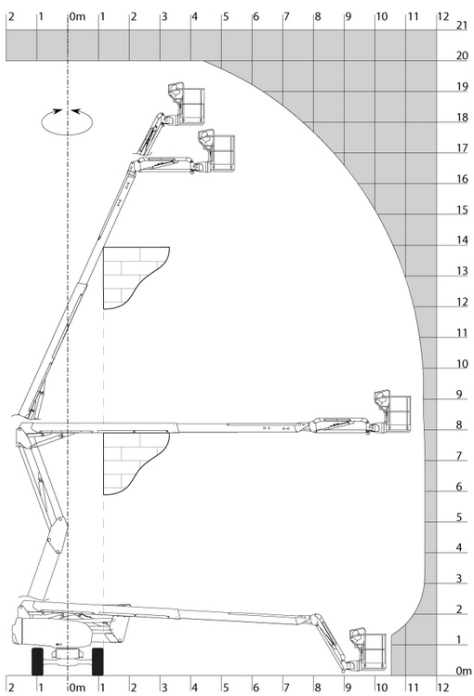


Capacities		Metric
Working height	h21	20 m
Platform height	h7	18 m
Max. outreach		11.57 m
Overhang		7.90 m
Pendular arm rotation (top / bottom)		+65 ° / -60 °
Platform capacity	Q	250 kg
Turret rotation		360 °
Platform rotation (right / left)		90 ° / 90 °
Number of people (inside / outside)		2 / 2
Weight and dimensions		
Platform weight*		7530 kg
Platform dimensions (length x width)	lp / ep	2.10 m x 0.80 m
Overall width	b1	2.38 m
Overall length	l1	8.34 m
Overall height	h17	2.46 m
Overall length (stowed)	l9	6.06 m
Overall height (stowed)	h18	2.81 m
Floor height (access)	h20	0.45 m
Counterweight offset (turret at 90°)	a7	0.61 m
Internal turning radius (over tyres)	b13	1.27 m
External turning radius	Wa3	3.78 m
Ground clearance at centre of wheelbase	m2	0.38 m
Wheelbase	y	2.30 m
Performances		
Drive speed - stowed		5.30 km/h
Drive speed - raised		0.70 km/h
Gradeability		45 %
Permissible leveling		4 °
Wheels		
Tyres type		Foam-filled
Standard tyres		Camso - 910 x 365
Drive wheels (front / rear)		2 / 2
Steering wheels (front / rear)		2 / 2
Braking wheels (front / rear)		0 / 2
Engine/Battery		
Battery / Batteries capacity		48 V / 460 Ah
Integrated charger (V / A)		48 V / 60 A
Miscellaneous		
Ground Pressure		10.90 dan/cm2
Hydraulic Pressure		240 bar
Hydraulic tank capacity		24 l
Standards compliance		
This machine is in compliance with:		European directives: 2006/42/EC- Machinery (revised EN280:2013) - 2004/108/EC (EMC) - 2006/95/EC (Low voltage)

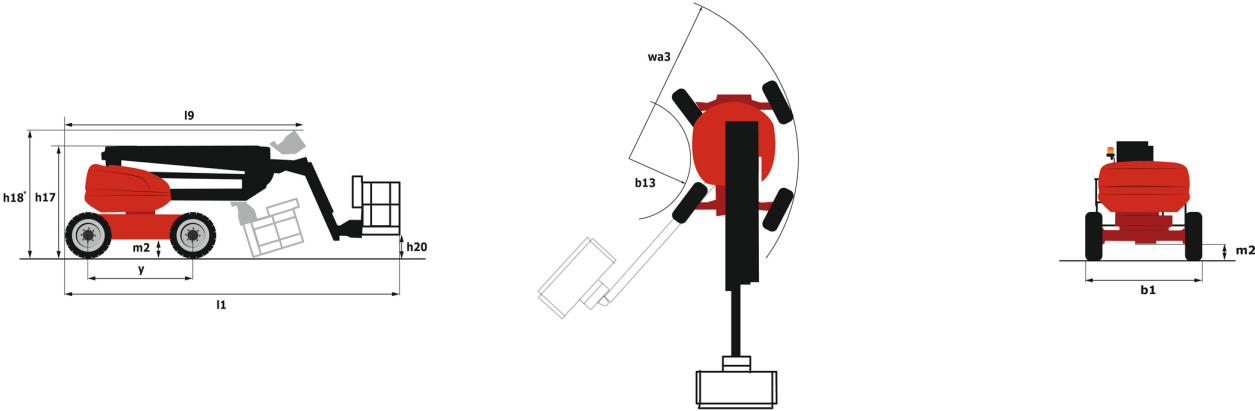
\*Varies according to options and standards of the country to which the machine is delivered

200 ATJ e 4WS CR - Load chart

Load Chart metric



200 ATJ e 4WS CR - Dimensional drawing



# Equipment

## Standard

230V Predisposition

4 simultaneous movements

4 wheel drive

4 wheel steer with crab mode

Audible alarm and illuminated indicator lamp (leveling, overload, lowering)

Backup electrical pump

CAN bus technology

Continuous turret rotation

Dead man pedal

Differential locking on rear axle

Easy Manager

Emergency stop button in platform and on frame

Flat Led Rotating Beacon

Foam filled tyres

Integrated diagnostic assistance

Large color screen on turret

Lead acid batteries

Multi-voltage integrated charger

Multi-voltage integrated charger Zivan 48V /60 A

Oscillating front axle

Protective cover for control panel

SPS : Secondary protection system

Screen information in the basket

Tool box in platform

Travel possible at maximum height

Two electric motors of 8.5kW and 16kW

## Optional

110 or 230V plug with differential circuit breaker

Access control keypad for easy link

Beep on every movement

Beep upon travel

Biodegradable oil

Coded anti-start

Easy link with remote lock

Electric centralized filling

Fully galvanized basket 1800mm with lateral door

Galvanized basket 1,800 mm

Key lock on turret cover

Non-marking tyres

Safety kit (Harness + helmet)

Water predisposition



**Head Office**

B.P. 249 - 430 rue de l'Aubinière

44150 Ancenis Cedex - France

Tel: +33 (0)2 40 09 10 11 - Fax: +33 (0)2 40 09 10 97

[www.manitou.com](http://www.manitou.com)



This publication provides a description of the configuration versions and options for Manitou products, which may differ for equipment. The equipment presented in this brochure may be part of a series, as an option, or it may not be available, depending on the versions. Manitou reserves the right, at any time and without notice, to amend the specifications described and represented. The specifications provided do not bind the manufacturer. For more details, please contact your Manitou agent. This is not a contractually binding document. The presentation of the products is not contractually binding. List of specifications non-exhaustive. The logos as well as the visual identity of the company are owned by Manitou and cannot be used without authorisation. All rights reserved. The photos and diagrams contained in this brochure are only provided for consultation and information purposes.

MANITOU BF SA - Limited company with board of directors - Share capital: 39,668,399 euros - 857 802 508 RCS Nantes