

Technical sheet :

200 ATJ E

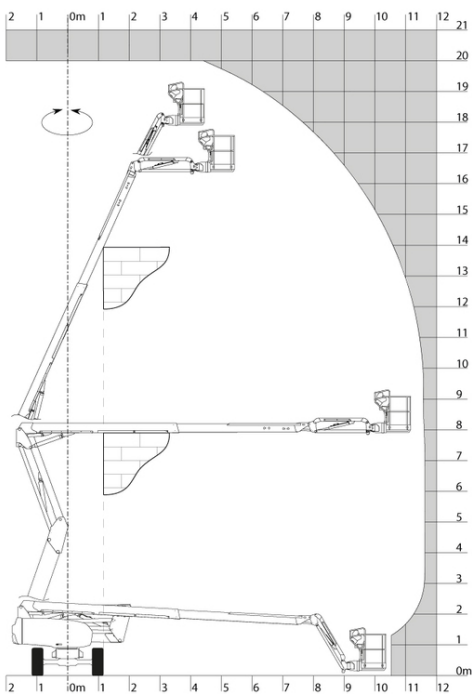


Capacities		Metric
Working height	h21	20 m
Platform height	h7	18 m
Max. outreach		11.57 m
Overhang		7.90 m
Pendular arm rotation (top / bottom)		+65 ° / -60 °
Platform capacity	Q	230 kg
Turret rotation		350 °
Platform rotation (right / left)		90 ° / 90 °
Number of people (inside / outside)		2 / 2
Weight and dimensions		
Platform weight*		7100 kg
Platform dimensions (length x width)	lp / ep	1.50 m x 0.75 m
Overall width	b1	2.32 m
Overall length	l1	8.34 m
Overall height	h17	2.46 m
Overall length (stowed)	l9	6.06 m
Overall height (stowed)	h18	2.71 m
Floor height (access)	h20	0.40 m
Counterweight offset (turret at 90°)	a7	0.64 m
Internal turning radius (over tyres)	b13	2.42 m
External turning radius	Wa3	5.31 m
Ground clearance at centre of wheelbase	m2	0.38 m
Wheelbase	y	2.30 m
Performances		
Drive speed - stowed		5.30 km/h
Drive speed - raised		0.70 km/h
Gradeability		45 %
Permissible leveling		4 °
Wheels		
Tyres type		Solid non-marking tires
Standard tyres		Camso - 910 x 365
Drive wheels (front / rear)		2 / 2
Steering wheels (front / rear)		2 / 0
Braking wheels (front / rear)		0 / 2
Engine/Battery		
Battery / Batteries capacity		48 V / 460 Ah
Integrated charger (V / A)		48 V / 60 A
Miscellaneous		
Ground Pressure		10.90 dan/cm2
Hydraulic Pressure		240 bar
Hydraulic tank capacity		24 l
Standards compliance		
This machine is in compliance with:		European directives: 2006/42/EC- Machinery (revised EN280:2013) - 2004/108/EC (EMC) - 2006/95/EC (Low voltage)

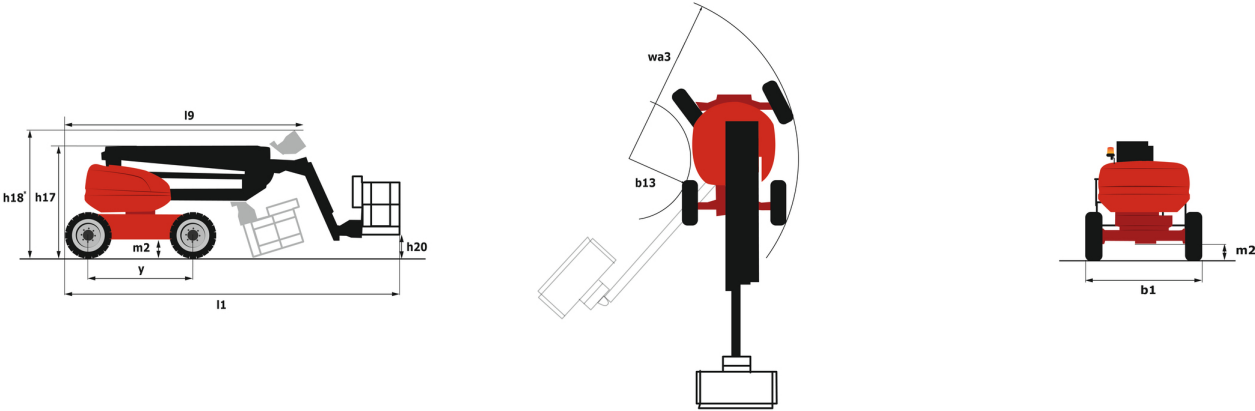
*Varies according to options and standards of the country to which the machine is delivered

200 ATJ e - Load chart

Load Chart metric



200 ATJ e - Dimensional drawing



Equipment

Standard

230V Predisposition
 4 simultaneous movements
 4 wheel drive
 Audible alarm and illuminated indicator lamp (leveling, overload, lowering)
 Backup electrical pump
 Biodegradable oil
 CAN bus technology
 Centralized recharging of battery
 Dead man pedal
 Differential locking on rear axle
 Easy Manager
 Emergency stop button in platform and on frame
 Flat Led Rotating Beacon
 Fully galvanized basket with demountable floor
 Integrated diagnostic assistance
 Large color screen on turret
 Lead acid batteries
 Multi-voltage integrated charger
 Non-marking tyres
 Oscillating front axle
 Protective cover for control panel
 Screen information in the basket
 Simplified lift system
 Tool box in platform
 Travel possible at maximum height
 Two electric motors of 8.5kW and 16kW

Optional

110 or 230V plug with differential circuit breaker
 Access control keypad for easy link
 Beep on every movement
 Beep upon travel
 Biodegradable oil
 Coded anti-start
 Easy link with remote lock
 Fully galvanized basket 1500mm with lateral door
 Fully galvanized basket 1800mm with lateral door
 Galvanized basket 1,800 mm
 Key lock on turret cover
 SPS : Secondary protection system
 Safety kit (Harness + helmet)
 Water predisposition
 Working headlight in platform



Head Office

B.P. 249 - 430 rue de l'Aubinière

44150 Ancenis Cedex - France

Tel: +33 (0)2 40 09 10 11 - Fax: +33 (0)2 40 09 10 97

www.manitou.com



This publication provides a description of the configuration versions and options for Manitou products, which may differ for equipment. The equipment presented in this brochure may be part of a series, as an option, or it may not be available, depending on the versions. Manitou reserves the right, at any time and without notice, to amend the specifications described and represented. The specifications provided do not bind the manufacturer. For more details, please contact your Manitou agent. This is not a contractually binding document. The presentation of the products is not contractually binding. List of specifications non-exhaustive. The logos as well as the visual identity of the company are owned by Manitou and cannot be used without authorisation. All rights reserved. The photos and diagrams contained in this brochure are only provided for consultation and information purposes.

MANITOU BF SA - Limited company with board of directors - Share capital: 39,668,399 euros - 857 802 508 RCS Nantes