

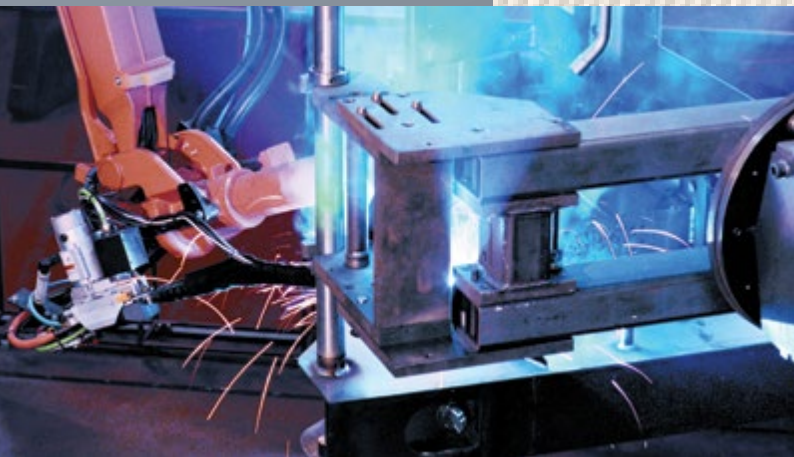


ARTICULATED LOADERS



608 ▲ 708

A LEGACY OF INNOVATION



WHAT BEGAN IN THE 19TH CENTURY AS AN AGRICULTURAL IMPLEMENT MANUFACTURER HAS GROWN INTO A 21ST CENTURY EQUIPMENT POWERHOUSE — MUSTANG COMPACT EQUIPMENT.

Known in the early years as the Owatonna Manufacturing Company, Mustang was among the first to make what is known today as the skid steer loader. Since that time, Mustang has combined old-school experience with innovative processes to offer one of the broadest lines of compact equipment available today.

MUSTANG. THE ORIGINAL WORKHORSE.



G R O W I N G T H E H E R D

Mustang developed their new Articulated Loaders with customer requests and feedback at the forefront of the design process. With articulated steering and speeds up to 19 mph (30 km/hr), these powerhouses deliver excellent maneuverability and fast work cycles to boost productivity.



ARTICULATED LOADERS

608



708



MADE IN AMERICA

MUSTANG 

PERFORMANCE

▲ POWER and ▲ PERFORMANCE

T H E O R I G I N A L W O R K H O R S E



PROPORTIONAL AUXILIARY HYDRAULICS

Proportional auxiliary hydraulics are standard equipment and activated with a rocker switch on the joystick. Detent and pressure relief are included to optimize attachment hook-up and performance.

TEN DEGREE OSCILLATION

Maintain full loads by keeping the tires in contact with uneven terrain.

POWER-A-TACH®

The Power-A-Tach® hydraulic attachment system is standard equipment and features a skid steer interface to utilize some of the attachments you already own.

45°
ARTICULATION



FULL FORCE BUCKET BREAKOUT

These machines offer some of the highest breakout forces in their respective classes, allowing you to fill the bucket to the max with each scoop, increasing productivity output.

INCHING PEDAL

The inching pedal offers maximum precision speed control, while maintaining the full force needed to lift the load.



LIFT HEIGHT

608	130.5" [3315 mm]
708	136.8" [3474 mm]



FULL TURN TIP CAPACITY

608 (4-Post)	4,917 lbs. [2230 kg]
608 (Cab)	5,244 lbs. [2379 kg]
708 (4-Post)	5,778 lbs. [2621 kg]
708 (Cab)	6,126 lbs. [2779 kg]



KING OF COMFORT

A seven-way adjustable seat, multi-function joystick, fully-adjustable steering column and cup holder are standard cab features.



MIGHTY MANEUVERS

Articulated steering brings a tight turning radius to speed up cycle times and increase maneuverability in tight areas.

FRONT AND REAR LOCKING DIFFERENTIALS

Conveniently located on the joystick, one button will activate four wheel drive for maximum tractive effort when pushing into a pile.

EASY ENTRY

A low, non-slip step is essential for tasks requiring the operator to frequently enter and exit the machine.

OPERATOR STATION

▲ COMFORT and ▲ SAFETY

DIGITAL DISPLAY

This information center shows real time fuel consumption, engine RPM's, machine hours, engine diagnostic codes, warning indicators and more.



ADJUSTABLE ARM REST

2" (51 mm) SEATBELT

Optional 3" (76 mm) seatbelt available

OPERATOR PRESENCE

The machine safety system allows operation only when the user is on the seat.

FULLY-ADJUSTABLE STEERING COLUMN

VISIBILITY

Wide openings in the front and side of the machine provide 360 degree visibility of job surroundings and bystanders.

MULTI-FUNCTION JOYSTICK

Controls nearly all loader hydraulic functions from one joystick, allowing the operator to keep one hand on the steering wheel for increased safety and efficiency.

EASY ENTRY AND EXIT

Wide opening and a low, non-slip step allow for easy access to the operator station.

OPERATOR STATION CONFIGURATIONS

4-POST



CAB



*ROPS with Front and Rear Glass Option Not Shown



OPERATOR STATION COMFORT FEATURES

THREE DOOR POSITIONS



VENTILATION

On cab models, the door can be positioned three ways to customize air flow.



BLUETOOTH

A hands-free bluetooth mp3 capable radio with weather-proof speakers is optional.



CLIMATE CONTROL

Heat is standard on all cab models. Upgrade to air conditioning for total comfort.

CUP HOLDER



ADJUSTABLE SEAT

A seven-way adjustable seat provides exceptional operator comfort. On 4-post models, a drain in the seat provides excellent drainage in wet conditions.

Deluxe air suspension seat shown.



SERVICE & SAFETY

▲ MAINTENANCE and ▲ SAFETY



EXCELLENT VIEWS FROM ALL SIDES FOR SAFE AND PRECISE OPERATION

Excellent visibility to the front, sides and rear of the machine allow for precise placement of loads and reduced jobsite incidents. A high-mounted seat provides an excellent vantage point to the attachment.



LESS DOWNTIME PUTS MONEY IN YOUR POCKET

AUDIBLE WARNING DEVICES

A horn is standard equipment. An optional backup alarm alerts bystanders of machine presence.

REVERSING FAN

Fan can be temporarily reversed to eject debris from the hydraulic and engine cooler, simply by pushing a button in the cab.

ARTICULATION LOCKING BAR

During transport or lifting, the articulation locking bar provides additional stability and safety.

REMOVABLE SIDE PANELS

Two removable side panels grant access to the back of the cab, the front of the cooler, and the hydraulic filter.



TOOL-FREE ACCESS

A lockable, self-opening hood allows access to the engine, hydraulic pumps, battery, fuse panels, fan motor and more.

HEAVY DUTY COMPONENTS

Robust cast joint and bearings are designed to last the life of the machine. All grease fittings in the articulation joint are easily accessible.

MARKETS & ATTACHMENTS

▲ ATTACHMENTS

NEED VERSATILITY?

Compatible with most allied loader attachments, articulated loaders from Mustang provide superior loader functionality while minimizing damage to ground surfaces. Perfect for landscape, agriculture, construction or rental – these machines are up for any challenge.



▲ Available accessories*

					608 - 708		
BALE FORKS	Acronym	Width mm	Capacity kg	Capacity l	All-Tach®	4 points	Euro 8
	FB 800/800	>800 <1200	800	-	▲	▲	▲
BALE CLAMP							
	CLBR 2x2/1000	<1200	800	-	▲	▲	▲
SHEAR GRAB							
	SHG 1400/800	1400	-	750	▲	▲	▲
SWEEP COLLECTOR							
	SCC 2050	2050	-	200	▲	▲	▲
	SCC 2300	2300	-	220	▲	▲	▲
ADAPTOR							
	IC-EURO	-	-	-	▲	▲	▲
	IC-4 Points	-	-	-	▲	▲	▲
STANDARD DIGGING BUCKET							
	BS 1650/730	1650	730		▲	▲	▲
	BS 1800/800	1800	800	440	▲	▲	▲
	BS 1950/860	1950	860		▲	▲	▲
	BS 2150/950	2150	950		▲	▲	▲
STANDARD DIGGING BUCKET WITH WEAR PLATE							
	BS 1650/730 WP	1650	730		▲	▲	▲
	BS 1800/800 WP	1800	800	440	▲	▲	▲
	BS 1950/860 WP	1950	860		▲	▲	▲
	BS 2150/950 WP	2150	950		▲	▲	▲
STANDARD DIGGING BUCKET WITH TEETH							
	BS 1650/730 T	1650	730		▲	▲	▲
	BS 1800/800 T	1800	800	440	▲	▲	▲
	BS 1950/860 T	1950	860		▲	▲	▲
	BS 2150/950 T	2150	950		▲	▲	▲
LIGHT MATERIAL BUCKET		LIGHT MATERIAL BUCKET WITH WEAR PLATE					
	BLM 1650/1100	BLM 1650/1100 WP	1650	1090	▲	▲	▲
	BLM 1800/1200	BLM 1800/1200 WP	1800	1200	▲	▲	▲
	BLM 1950/1300	BLM 1950/1300 WP	1950	1290	▲	▲	▲
	BLM 2150/1420	BLM 2150/1420 WP	2150	1420	▲	▲	▲
4X1 BUCKET		4X1 BUCKET WITH TEETH					
	B4x1 1650/610	B4x1 1650/610 T	1650	610	▲	▲	▲
	B4x1 1800/670	B4x1 1800/670 T	1800	670	▲	▲	▲
	B4x1 1950/720	B4x1 1950/720 T	1950	720	▲	▲	▲
	B4x1 2150/800	B4x1 2150/800 T	2150	800	▲	▲	▲
GRAPPLE BUCKET WITH FORGED TINES							
	BG 1650/FO	1650	660		▲	▲	▲
	BG 1950/FO	1950	780	400	▲	▲	▲
	BG 2150/FO	2150	860		▲	▲	▲
FARM FORK							
	FM 1650	1650	-		▲	▲	▲
	FM 1950	1950	-	-	▲	▲	▲
	FM 2150	2150	-		▲	▲	▲
FARM FORK WITH GRAPPLE							
	FMG 1650	1650	660		▲	▲	▲
	FMG 1950	1950	780	-	▲	▲	▲
	FMG 2150	2150	860		▲	▲	▲

BEST SELLERS



GET ATTACHED

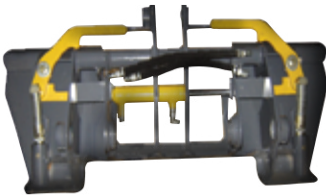
TIME IS PRICELESS ON THE JOBSITE,
SO MUSTANG HAS MADE IT SIMPLE
AND FAST TO HOOK UP A WIDE
VARIETY OF ATTACHMENTS.



Euro 8



Hook & Pin



Skid steer

POWER-A-TACH®

The hydraulic attachment mounting system is standard equipment and features interfaces to utilize some of the attachments you already own.



○ STANDARD ● OPTIONAL

FEATURES	4-POST	CAB	4-POST	CAB
	608	708	608	708
STRUCTURE				
4-Post Canopy - ROPS/FOPS Certified	○		○	
4-Post Canopy with Front and Rear Windows	●		●	
Cabin with Heat			●	●
Cabin with Heat and Air Conditioning			●	●
PERFORMANCE				
Power-A-Tach® Attachment Mounting System	○	○	○	○
Proportional Auxiliary Hydraulics with Case Drain and Circuit Pressure Dump	○	○	○	○
Tapered Z-bar Loader Linkage with Mechanical Self-Level and Return-to-Dig	○	○	○	○
Hydraglide™ Ride Control	●	●	●	●
Rear Auxiliary Hydraulics	●	●	●	●
Additional Set of Front Auxiliary Hydraulics	●	●	●	●
High-Flow Auxiliary Hydraulics	●	●	●	●
Hydrostatic 2-Speed Transmission	○	○	○	○
Tilt and Lift Arm Float Detent with Detent Disable	○	○	○	○
Oscillating Front Frame	○	○	○	○
Differential Lock (Hydraulically Activated Front and Rear)	○	○	○	○
Electric Attachment Control 14-Pin Harness with Switches	●	●	●	●
Articulation Locking Bar (conforms to SAEJ276)	○	○	○	○
3-Speed				
608 7 / 12 / 19 mph (11 / 20 / 30 km/hr)	●	●	●	●
708 5 / 12 / 19 mph (8 / 20 / 30 km/hr)	●	●	●	●
Inching Pedal	○	○	○	○
Rear Mount – Clevis	●	●	●	●
Rear Mount – Receiver	●	●	●	●
ENGINE				
Engine Block Heater	●	●	●	●
ELECTRICAL SYSTEM				
Lift / Tilt Electronic Lockout Switch	○	○	○	○
Master Electrical Disconnect Switch	○	○	○	○
Emergency Lift Arm Lower Switch	○	○	○	○
OPERATOR STATION				
Digital Display with Audible and Visual Indicators	○	○	○	○
Multi-Function Joystick	○	○	○	○
Steering Column with Tilt and Extension Adjustments	○	○	○	○
Cup Holder	○	○	○	○
Horn	○	○	○	○
Seven-Way Adjustable Mechanical Seat	○	○	○	○
Seven-Way Adjustable Air Suspension Seat	●	●	●	●
Seven-Way Adjustable Deluxe Cloth Air Suspension Seat			●	●
Adjustable Arm Rest	○	○	○	○
3-inch (75 mm) Seatbelt	●	●	●	●
Removable Rubber Floor mat	○	○	○	○
12-Volt Socket in Arm Rest	○	○	○	○
Front and Rear 12-Volt Electric Auxiliary	●	●	●	●
Side View Mirrors	○	○	○	○
Lockable Tool Box	●	●	●	●
Radio	●	●	●	●
Back-up Alarm	●	●	●	●
Speed Control	●	●	●	●
Sound Reduction Package	●	●	●	●
Reverse and Brake Tail Lights	○	○	○	○
WORK LIGHTS				
Rotating Beacon	●	●	●	●
Strobe Light	●	●	●	●
LED Work Lights	●	●	●	●

	608 - Canopy	608 - Cab	708 - Canopy	708 - Cab	
DIMENSIONS	A. Length with Bucket on Ground (mm)	199.9" (5077)	199.9" (5077)	205.5" (5220)	205.5" (5220)
	B. Shipping Length (mm)	167.7" (4260)	167.7" (4260)	174.9" (4443)	174.9" (4443)
	C. Front Wheel Center to Pivot Pin (mm)	32.8" (833)	32.8" (833)	36.7" (931)	36.7" (931)
	D. Wheelbase (mm)	79" (2007)	79" (2007)	81.2" (2063)	81.2" (2063)
	E. Rear Overhang (mm)	52.2" (1326)	52.2" (1326)	52.1" (1323)	52.1" (1323)
	F. Height to Top of Cab (mm)	97.1" (2467)	97.1" (2467)	97.5" (2476)	97.5" (2476)
	H. Hood Height (mm)	69.9" (1775)	69.9" (1775)	69.6" (1768)	69.6" (1768)
	J. Maximum Operating Height (mm)	157.8" (4008)	157.8" (4008)	163.8" (4160)	163.8" (4160)
	K. Bucket Hinge Pin Height (mm)	130.5" (3315)	130.5" (3315)	136.8" (3474)	136.8" (3474)
	L. Ground Plane to Bucket Edge Height (mm)	123" (3125)	123" (3125)	129" (3280)	129" (3280)
	M. Dump Clearance at Full Height (mm)	99" (2515)	99" (2515)	106.7" (2710)	106.7" (2710)
	N. Dump Reach at Full Height (mm)	20.9" (529)	20.9" (529)	22.4" (569)	22.4" (569)
	P. Width over Tires - Narrow / Wide (mm)	64.7" / 79.4" (1645 / 2017)	64.7" / 79.4" (1645 / 2017)	68.4" / 77.1" (1736 / 1957)	68.4" / 77.1" (1736 / 1957)
	Q. Tire Gauge	48.4" / 62.8" (1230 / 1595)	48.4" / 62.8" (1230 / 1595)	52.4" / 60.8" (1327 / 1544)	52.4" / 60.8" (1327 / 1544)
	R. ROPS Width (mm)	53.9" (1370)	53.9" (1370)	57.1" (1451)	57.1" (1451)
	S. Ground Clearance (mm)	14.6" (370)	14.6" (370)	12.3" (313)	12.3" (313)
	T. Turning Radius with Bucket (mm)	143.2" (3637)	143.2" (3637)	155.3" (4159)	155.3" (4159)
	U. Outer Turning Radius (mm)	130.3" (3310)	130.3" (3310)	134.2" (3409)	134.2" (3409)
	V. Inner Turning Radius (mm)	62.1" (1577)	62.1" (1577)	63.8" (1620)	63.8" (1620)
	W. Articulation Angle from Center (mm)	45°	45°	45°	45°
	X. Rollback at Height	45°	45°	45°	45°
	Y. Maximum Dump Angle at Full Height	45°	45°	45°	45°
Z. Bucket Rollback at Ground	45°	45°	45°	45°	
AA. Attachment Pivot Clearance (mm)	7.5" (190)	7.5" (190)	7.5" (190)	7.5" (190)	
BB. Wheel Radius (mm)	19.5" (495)	19.5" (495)	19.5" (495)	19.5" (495)	
CC. Bucket Width - standard (mm)	66" (1676)	66" (1676)	84" (2134)	84" (2134)	
ENGINE	Engine Manufacturer	Yanmar	Yanmar	Deutz	Deutz
	Model / Number of Cylinders	4TNV98CT / 4	4TNV98CT / 4	TD 3.6 L4 / 4	TD 3.6 L4 / 4
	Displacement (L)	0.87 gal. (3.3 L)	0.87 gal. (3.3 L)	0.95 gal (3.6 L)	0.95 gal (3.6 L)
	Power (kW) @ 2300 rpm ¹	64.4 hp (48)	64.4 hp (48)	74.3 hp (55)	74.3 hp (55)
LOAD CAPACITIES	Static Tipping Load with Bucket				
	Straight (kg)	6,409 lbs. (2907)	6,743 lbs. (3059)	7,446 lbs. (3378)	7,907 lbs. (3587)
	Full Turn (kg)	4,917 lbs. (2230)	5,244 lbs. (2379)	5,778 lbs. (2621)	6,126 lbs. (2779)
	Static Tipping Load with Pallet Forks				
	Straight (kg)	4,980 lbs. (2259)	5,302 lbs. (2405)	6,044 lbs. (2741)	6,354 lbs. (2882)
	Full Turn (kg)	3,921 lbs. (1778)	4,157 lbs. (1885)	4,793 lbs. (2174)	5,006 lbs. (2271)
Bucket Breakout (kg)	12,661 lbf (5743)	12,661 lbf (5743)	13,020 lbf (5906)	13,020 lbf (5906)	
Operating Weight (kg)	9,150 lbs. (4150)	9,500 lbs. (4309)	10,540 lbs. (4781)	10,920 lbs. (4953)	
HYDRAULICS	Work Hydraulic System Flow (L/min) STD	18.4 gpm (69.5)	18.4 gpm (69.5)	18.4 gpm (69.5)	18.4 gpm (69.5)
	High-Flow Auxiliary Hydraulics - optional (L/min)	25.6 gpm (96.9)	25.6 gpm (96.9)	30.2 gpm (114.3)	30.2 gpm (114.3)
	Work Hydraulic System Pressure (bar)	2,900 psi (200)	2,900 psi (200)	2,900 psi (200)	2,900 psi (200)
	Drive Hydraulic System Pressure (bar)	6,092 psi (420)	6,092 psi (420)	5,511 psi (380)	5,511 psi (380)
	Drive Hydraulic Reservoir Capacity (L)	19.5 gal. (73.8)	19.5 gal. (73.8)	19.5 gal. (73.8)	19.5 gal. (73.8)
OTHER	Battery	12-volt	12-volt	12-volt	12-volt
	Fuel Tank Capacity (L)	25 gal. (95)	25 gal. (95)	27 gal. (102)	27 gal. (102)
	Maximum Travel Speed (km/hr)	7/12/19 mph (11/20/30)	7/12/19 mph (11/20/30)	5/12/19 mph (8/20/30)	5/12/19 mph (8/20/30)
	Tire Size - Standard	405 / 70-20	405 / 70-20	405 / 70-20	405 / 70-20

¹ Per ISO 14396

Mustang reserves the right to make changes in specifications at any time without notice or obligation.

For more information on Mustang equipment, visit our website:
Mustangmfg.com

TIRE OPTIONS

HIGH FLOTATION



Agricultural Tires

NON-DIRECTIONAL SELF-CLEANING



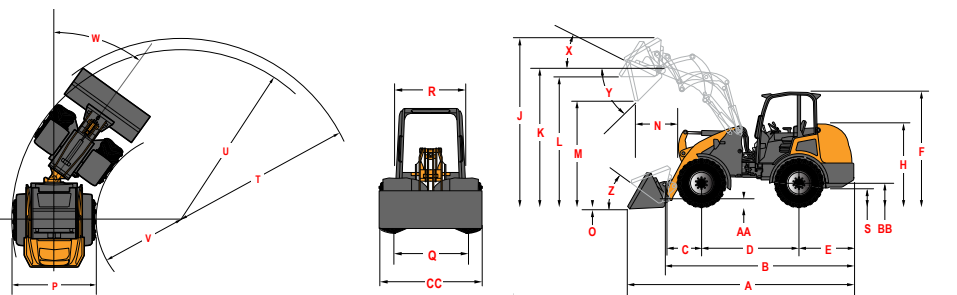
On / Off Road / Industrial Tires

AG/INDUSTRIAL HYBRID UNIVERSAL



On / Off Road Tires

REFERENCE DIAGRAMS



MILE | Rue des Andrains, 2, B-1360 Perwez | Tel.: +33 240092162



Mustang Mfg.



MustangEquipment